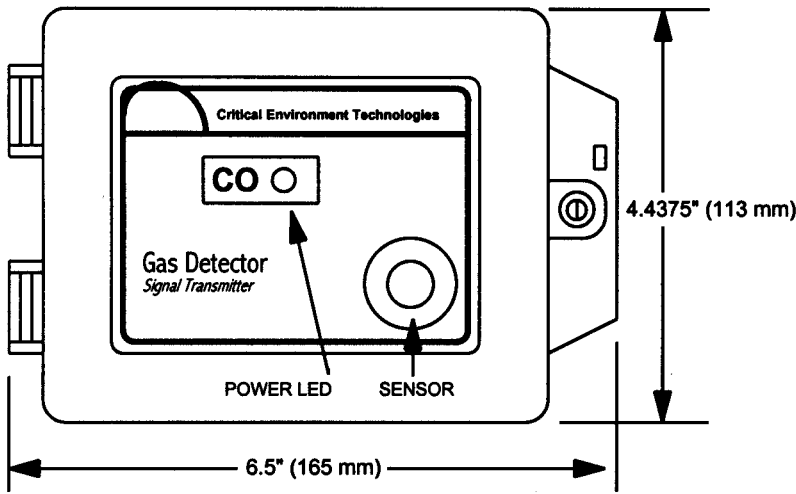
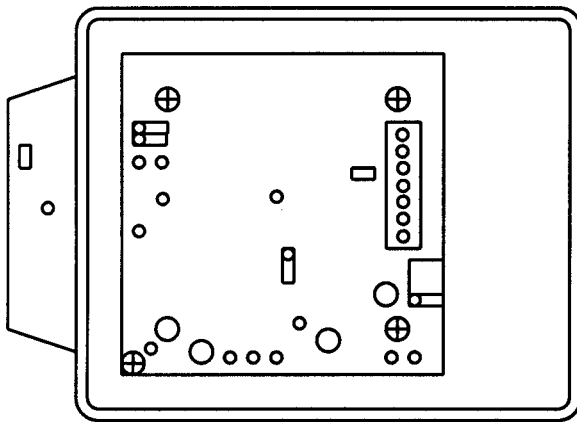
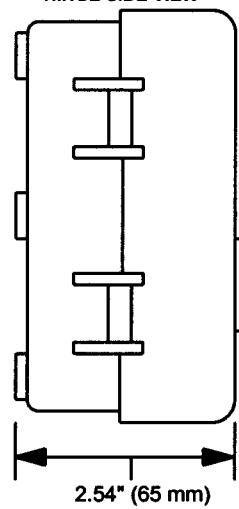


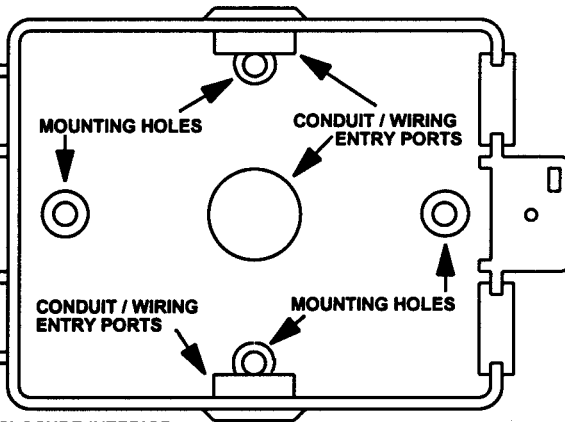
**FRONT DOOR VIEW**



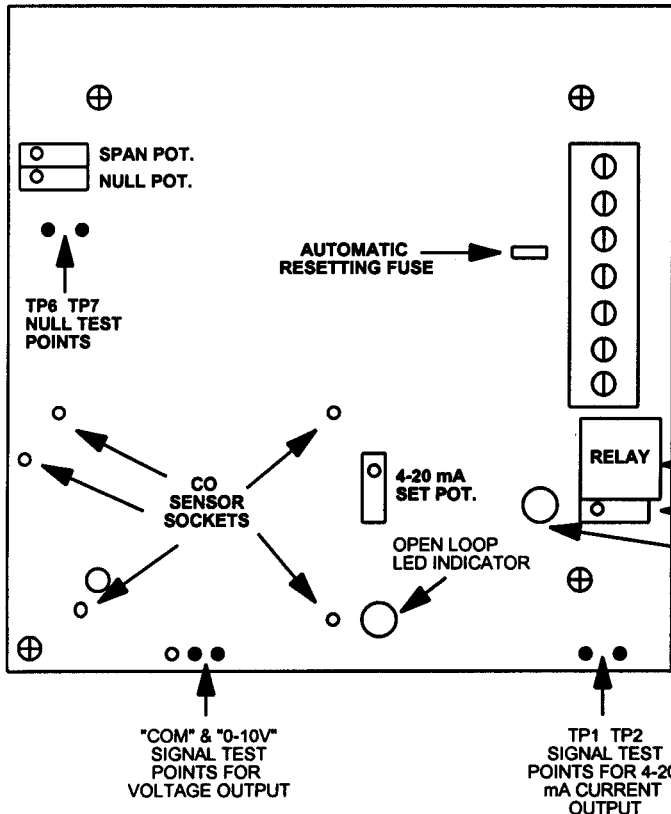
**HINGE SIDE VIEW**



**ENCLOSURE INTERIOR**



**CIRCUIT BOARD LAYOUT & WIRING CONNECTION IDENTIFICATION**



CIRCUIT BOARD DRAWING SHOWN IS ACTUAL SIZE

- AC (16-28 VAC) INCOMING POWER
- AC/DC (16-28 VAC or 20-30 VDC) INCOMING POWER
- GND (GROUND)
- SIG (SIGNAL 4-20 MA)
- NO (NORMALLY OPEN DRY CONTACT) "OPTION"
- COM (COMMON DRY CONTACT) "OPTION"
- NC (NORMALLY CLOSED DRY CONTACT) "OPTION"

- DRY CONTACT RELAY (S.P.D.T.) "OPTION"
- RELAY "SET" POTENTIOMETER "OPTION"
- RELAY COIL STATUS LED INDICATOR "OPTION"

**Critical Environment Technologies**

www.critical-environment.com

TITLE: AST SERIES TRANSMITTER WITH ELECTROCHEMICAL SENSOR & GENERAL PURPOSE PVC ENCLOSURE

DRAWING NUMBER: AST-893

REV: "B" APR-24-2001

DRAWN BY: F. B.

ENGINEER: F.A.