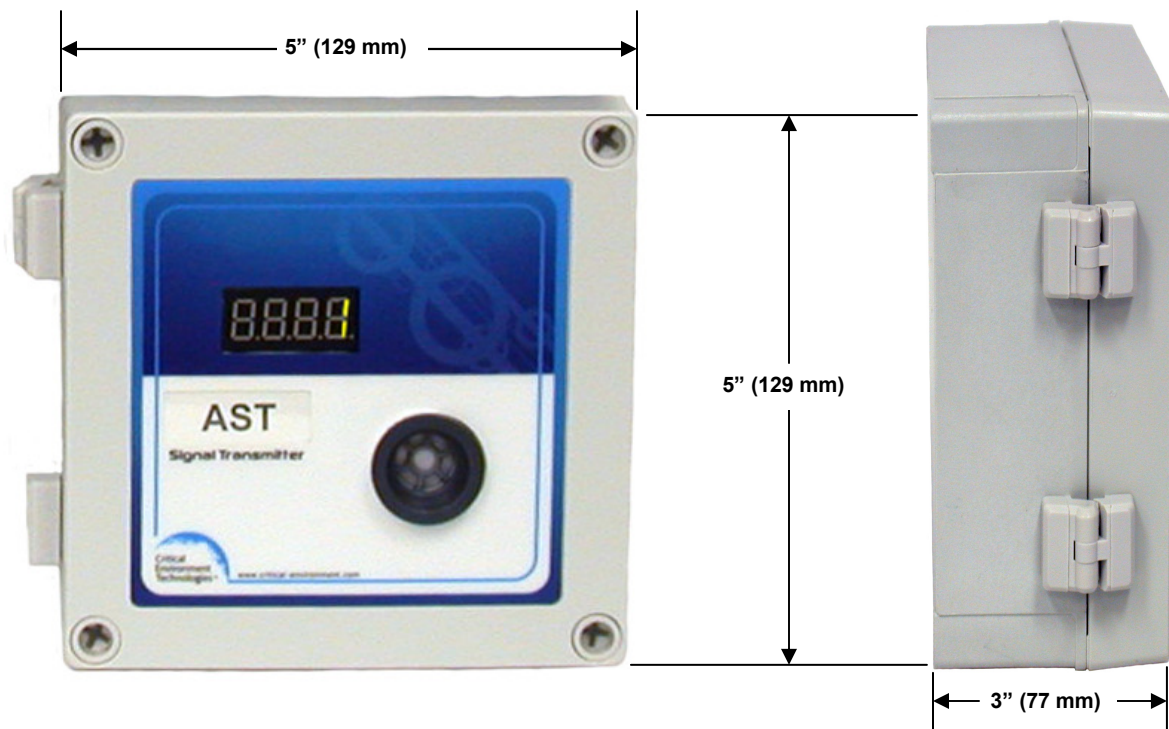
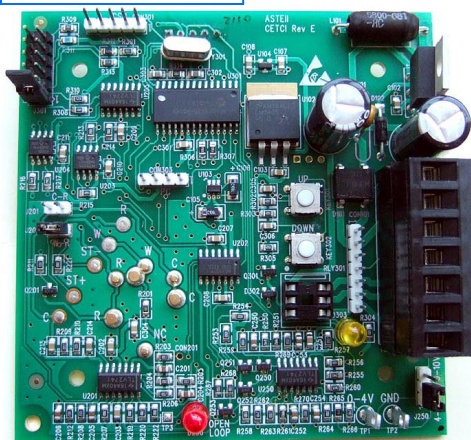


- AST-002-W (water/dust tight enclosure)
- AST-002-SW (water/dust tight enclosure c/w splash guard)
- AST-002-NSW (water/dust tight enclosure c/w splash guard and digital display)
- AST-002-NRSW (water/dust tight enclosure c/w splash guard, digital display & dry contact relay)



AST CIRCUIT BOARD



WIRING CONNECTIONS FOR VDC or VAC INSTALLER SUPPLIED POWER

- 24VAC
- 24VAC or 24VDC (POSITIVE)
- 24VDC (NEGATIVE)
- SIGNAL
- N/C (OPTIONAL RELAY)
- COM (OPTIONAL RELAY)
- N/O (OPTIONAL RELAY)

OPTIONAL DIGITAL DISPLAY

OPTIONAL SPLASH GUARD



CRITICAL ENVIRONMENT TECHNOLOGIES CANADA INC.

NAME:	DIMENSIONS & CONNECTIONS
MODEL:	AST-002-W
DATE:	JANUARY 26, 2012