

Manual Shutoff Switch



The Manual Shutoff Switch is a factory installed option that is available at the time of order for QCC models. The emergency stop, push button switch allows a person to manually shutdown equipment in the event of an emergency. Ideal for refrigeration applications; when combined with the Top Mounted Strobe, the device meets B52 code requirements.

The mechanism comes with one NC (normally closed) switch block. Normally closed is the reset / ready position.

Follow the instructions on the other side of this page for removal, wiring and re-mounting of the switch.

NOTE: The metal guard will not fit over a QCC that has a Manual Shutoff Switch installed.

KEY FEATURES

- » Manually shut down equipment in an emergency situation
- » Safety lock mechanism prevents operating errors
- » Finger protection mechanism
- » Push-lock, turn-reset feature
- » Meets B52 code requirements
- » RoHS Compliant

APPLICATIONS

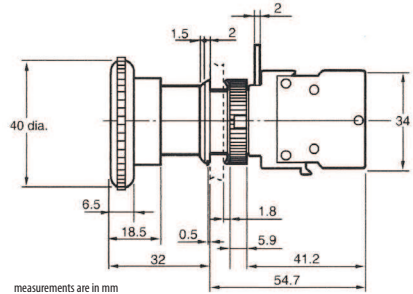
- » Refrigeration Compressor Rooms
- » Cold Storage Rooms
- » Food Processing Plants
- » ... and many more

CETCI COMPATIBLE PRODUCTS

QCC Quad Channel Controller



TECHNICAL DRAWING



TECHNICAL SPECIFICATIONS

MECHANICAL

| | |
|-------------------|--|
| Size | 40 mm (1.57") diameter |
| Actuator Type | Round button, mushroom |
| Durability | (setting and resetting once = one operation) Mechanical 300,000 operations min. Electrical 300,000 operations min. |
| Mode of Operation | 1 NC contact, in reset position |
| Switch Function | ON-OFF |
| Features | Push-Lock, Turn-Reset |

ELECTRICAL

| | |
|---------------------|--|
| Dielectric Strength | Between terminals of same polarity and |
| | Between each terminal and ground: 2,500 VAC, 50/60 Hz for 1 min |
| Circuit | SPST-NC |
| Current Rating | 10A (AC/DC) |
| Voltage Rating | 110VAC, 24VDC |

ENVIRONMENTAL

| | |
|-----------------------|---|
| Operating Temperature | -40°C to 70°C (-40°F to 158°F) (with no icing or condensation) |
| Operating Humidity | 35% to 85% |

CERTIFICATION

| | |
|----------------------|--------------------------|
| Conforms to: | CSA-C22.2 No. 14, UL508 |
| Conforms to: | EN60947-5-1, EN60947-5-5 |
| IP65 (oil-resistant) | |

PRODUCT CODES (OPTION)

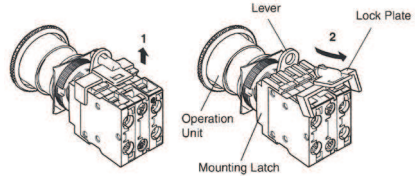
| | |
|-----|---|
| -SW | Manual Shutoff Switch (factory installed) |
|-----|---|

Manual Shutoff Switch

REMOVING FOR WIRING AND RE-MOUNTING

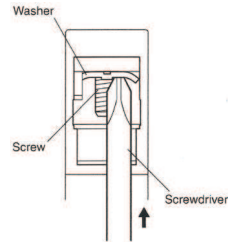
REMOVAL

- **Make sure the power is turned OFF before removing the switch. Do not touch the terminals or other current-carrying ports while power is being supplied. Electric shock may occur.**
- Remove the white lock plate by gently lifting the tab over the black bar with numbers 1, 2 3 on it. Slide the lock plate out of the red lever opening.
- Use a screwdriver or your thumb to slide the red lever to the unlock position (upwards, toward top of the QCC)
- Remove the switch unit, keeping the operation unit in place.

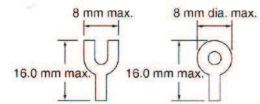


WIRING

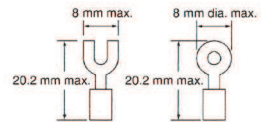
- The terminal screws are a Phillips or slotted M3.5 with a square washer.
- The tightening torque is 1.08 to 1.27 N-m.
- Single wires, stranded wires and crimp terminals can be connected to the switch. Applicable wiring materials: Twisted strands: 2 mm² max; Solid wire: 1.6 mm dia. max
- Loosen the terminal screw from the switch unit until it completely comes off the groove.
- Insert a screwdriver to the opening to push the square washer upwards to temporarily secure it.
- Connect the wires and tighten.
- After wiring the switch, maintain an appropriate clearance and creepage distance.



Naked Crimp Terminals

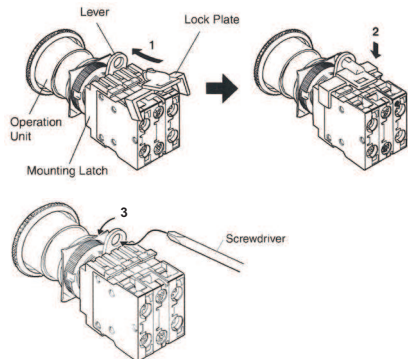


Crimp Terminals with insulating sheaths



RE-MOUNTING

- Follow the removal steps in reverse.
- Slide the switch unit back over the operation unit aligning the arrow on the operation unit with the 3 on the switch unit. (This is easier to do when the mechanism is in the reset position ie. not engaged. To reset, twist in the direction of the arrows on the red cap end of the operation unit.)
- Press the switch unit firmly against the operation unit and slide the red lever to the locked position (downwards, towards bottom of the QCC) until it clicks.
- Insert the slotted protrusion of the white lock plate into the red lever hole and gently press down over the black bar with the 1, 2 3 until the lock plate clicks into place.
- Make sure the mechanism is in the reset position, ready for use.



Contact CETCI if you require assistance or more information.